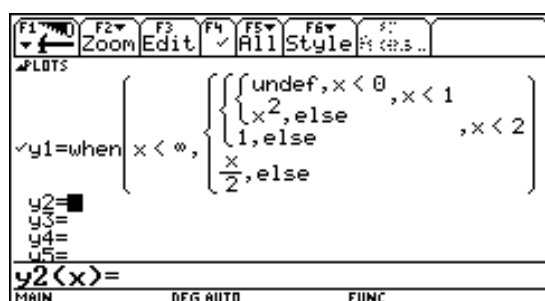


Multifun() is a little program to help you in big compound function definition.

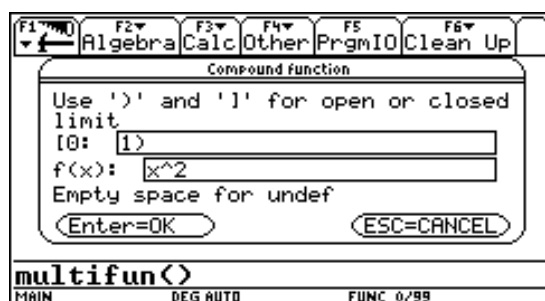
Try for example to enter this big function:



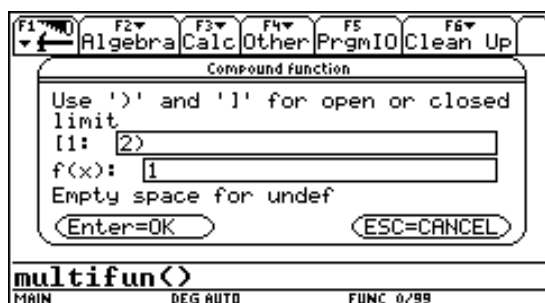
Follow step by step



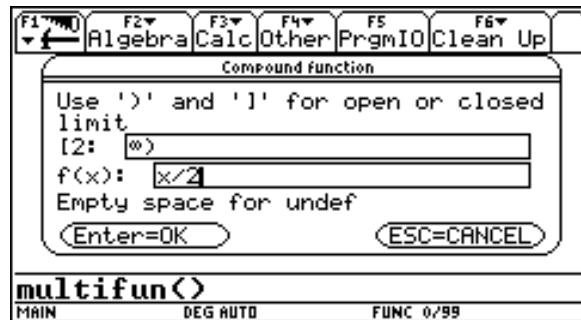
Enter



Enter

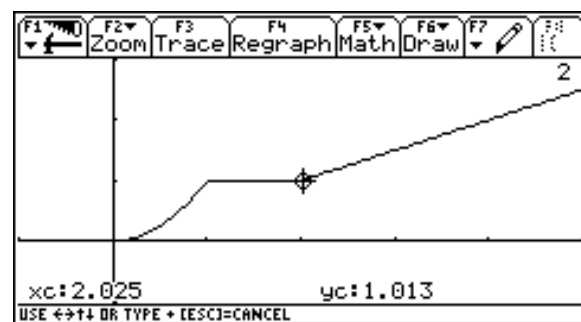


Enter



Enter

The program traces your function



and stores it in the first vacant place in Y= editor

This program is very useful for bigger function because it is possible to look only at a specific interval step by step.

This program has been already used many times without problems. If you finds any bug first assure you to have selected the English language in the mode and not to have translated the code with any program. If the problem persists please let me know.

For a better and faster answer please enclose some screenshot of the bug: entered inputs, expected outputs, error messages, erroneous code line, mode stetting... it will help me very much!

My address is paolosilingardi@interfree.it . Thank you very much for your help!

Paolo Silingardi