

Windows 7 (32 bit)/ Ticonnect compatibility (64bit explained further down)

For those who don't know, Windows 7 is Microsoft's newest operating system that will be officially released on October 22, 2009 to the public (preorders are available on Microsoft's website, amazon.com, newegg.com, and other places like that), and the Release Candidate has been available for download at <http://www.microsoft.com/windows/windows-7/get/download.aspx> for free (you will have about a year more of use for the release candidate)

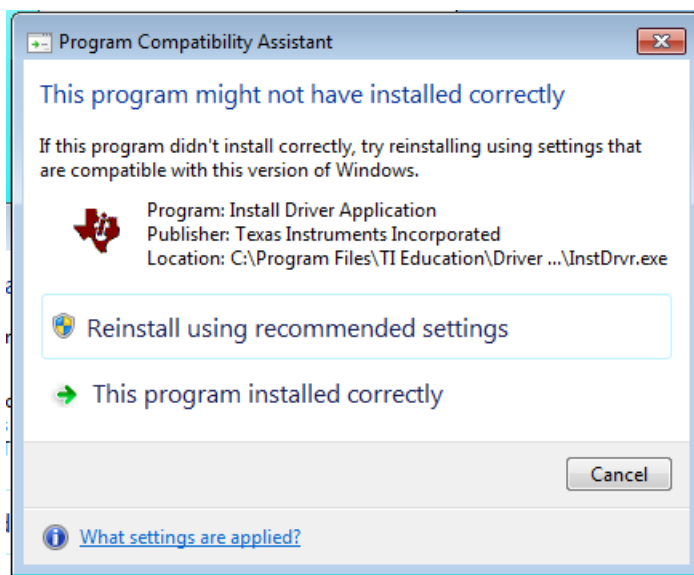
Before you purchase this Operating System there are compatibility issues in the cheapest version of Windows 7 (Home Premium) that are fixed in the higher versions which are important to know.

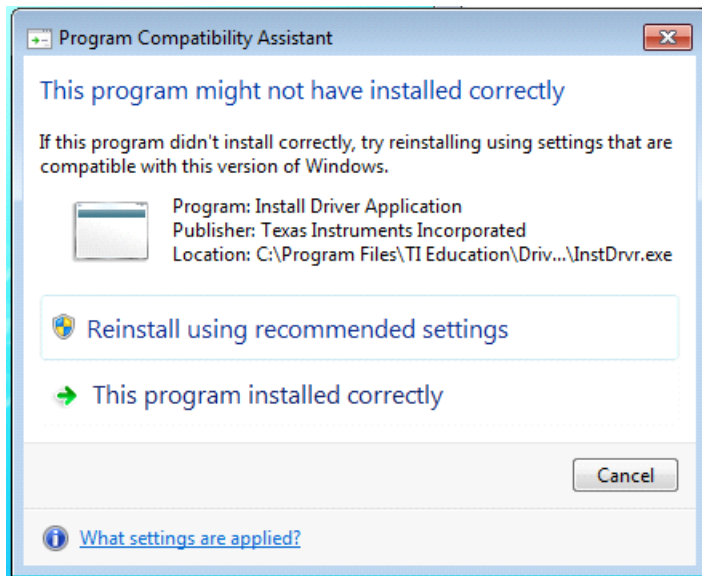
This explanation will cover all versions of Windows 7 (Home Premium 32bit and 64bit, Professional 32bit and 64bit, Ultimate 32bit and 64bit)

32bit will be covered first ,and 64bit will be covered next (32bit is basically a repeat of the setup on Vista, so if you have seen Vista's setup I recommend skipping to the 64 bit explanation.

32 BIT (Windows 7 Home Premium, Professional, Ultimate)

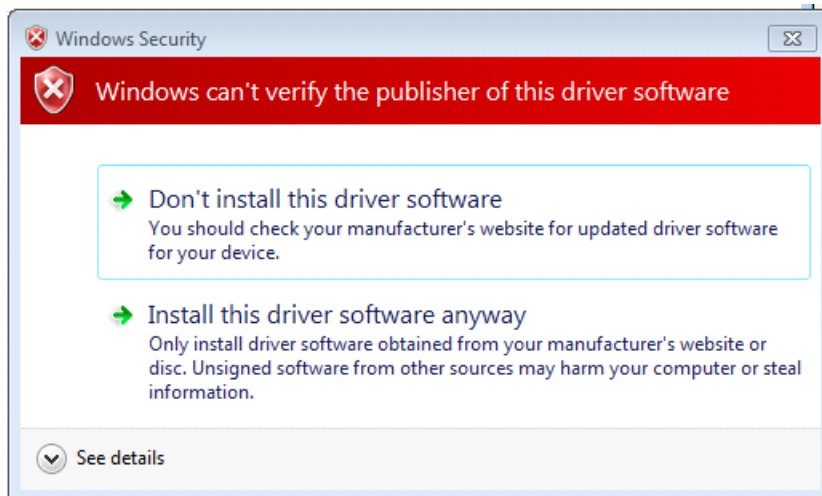
When installing Ticonnect (1.6) in Windows 7 (32bit) you will first get these messages:





Choose "This program installed correctly" on both.

Then this message:

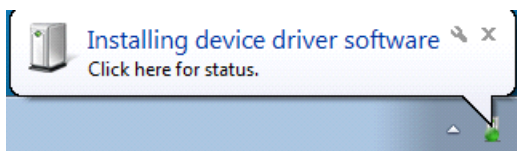


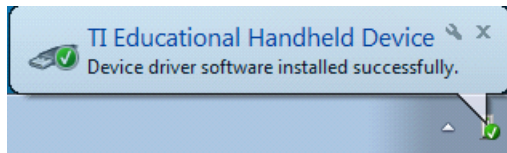
Will come up under these messages.

(Similar to Vista)

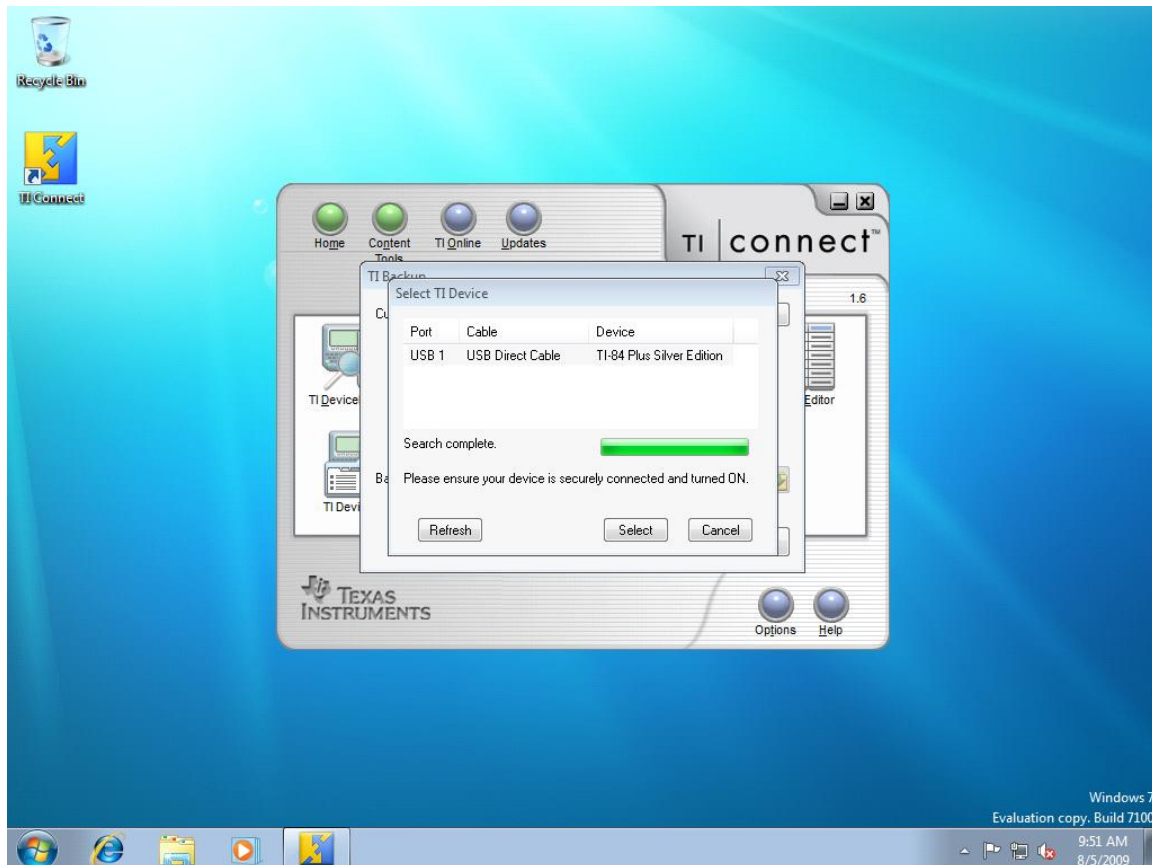
Choose "Install this driver software anyway"

You will then get these messages:





Here is the result:



Windows 7 64bit:

Since Texas Instruments has not made a 64bit driver yet, their calculators will not technically work on 64bit Operating Systems, but thanks to Windows 7 you will not have to worry about that.

Microsoft has included Virtual XP in Windows 7, and this eliminates this issue that 64bit gives to Texas Instruments drivers.

Virtual XP is basically the Windows XP Operating System accessible through a shortcut on Windows 7 and this eliminates the hassle of dual booting XP with another Operating System.

However, Virtual XP cannot be installed on all computers (Whether you have Windows 7 or not).

Virtual XP requires a processor that supports Intel Virtualization Technology or AMD-V, and if your processor does support it then you must enable Virtualization through the BIOS.

If you have a dual-core processor or above then your processor has a high chance of supporting Virtualization, but it is not a guarantee. I recommend checking your processor model (which can be found in device manager (right-click my computer in XP or Computer in Vista)) through the manufacture's website.

Plus, **ONLY** Windows 7 Professional and Ultimate have virtual XP, so if you are trying to decide which version you want then you should consider Professional or Ultimate in order to guarantee a fully compatible operating system.(Although the only program/drivers that I have that will not work in Windows 7 64bit RC1 is the Texas Instruments drivers.)

Once again:

To try Windows 7 go to:

<http://www.microsoft.com/windows/windows-7/get/download.aspx>

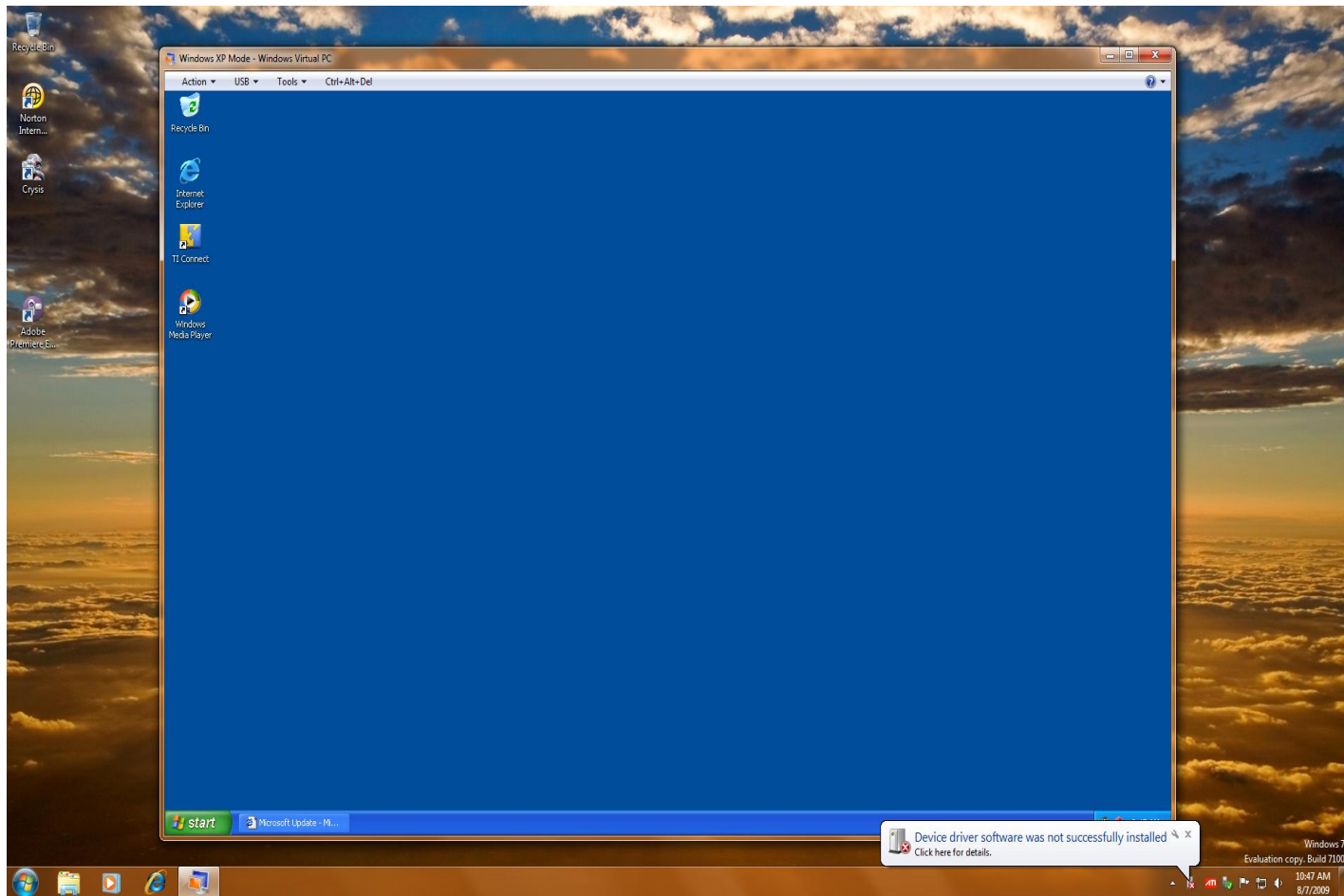
To get Virtual XP go to:

<http://www.microsoft.com/windows/virtual-pc/download.aspx>

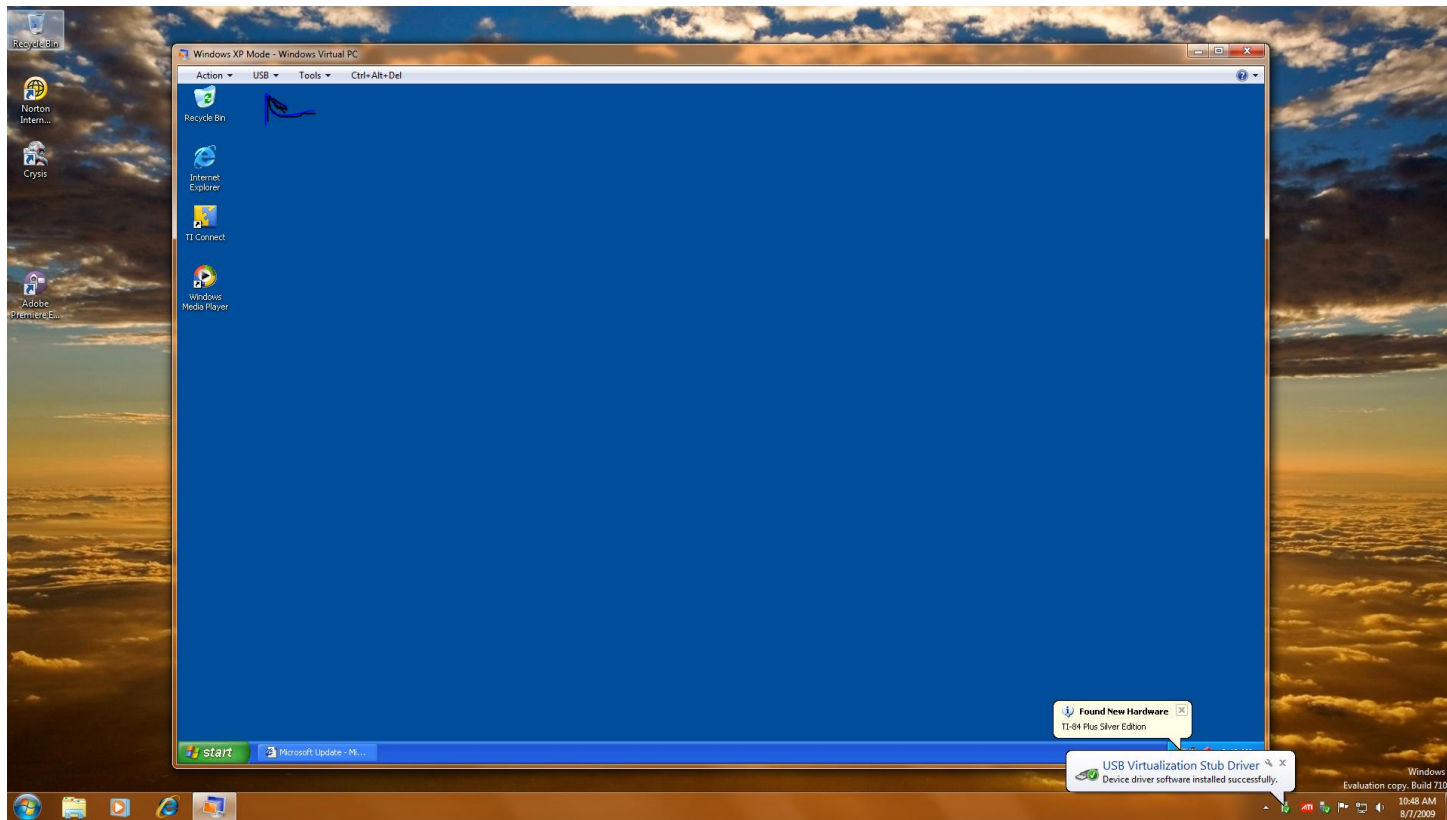
And follow the steps.

When you have Virtual XP you can install TI connect the same way that you would in XP.

To show an example of what happens when you plug in your calculator through Windows 7 64bit:



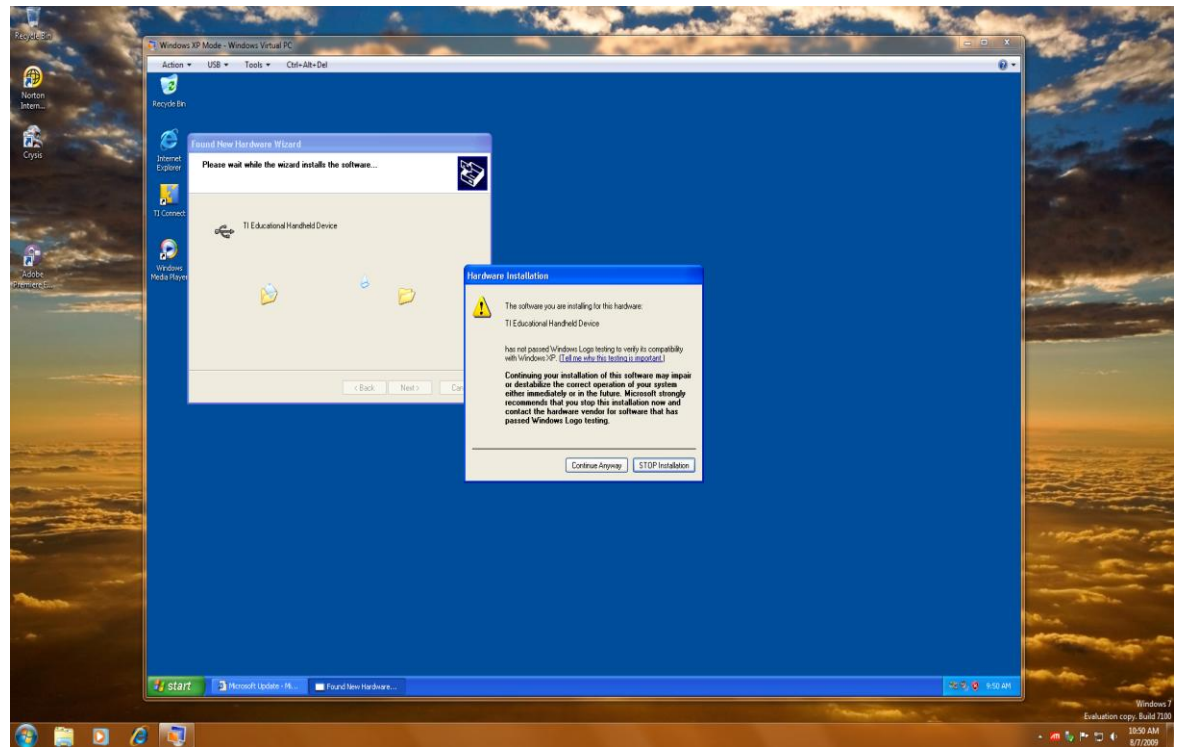
Notice how Windows 7 64bit does not accept the drivers, but here is when it will:



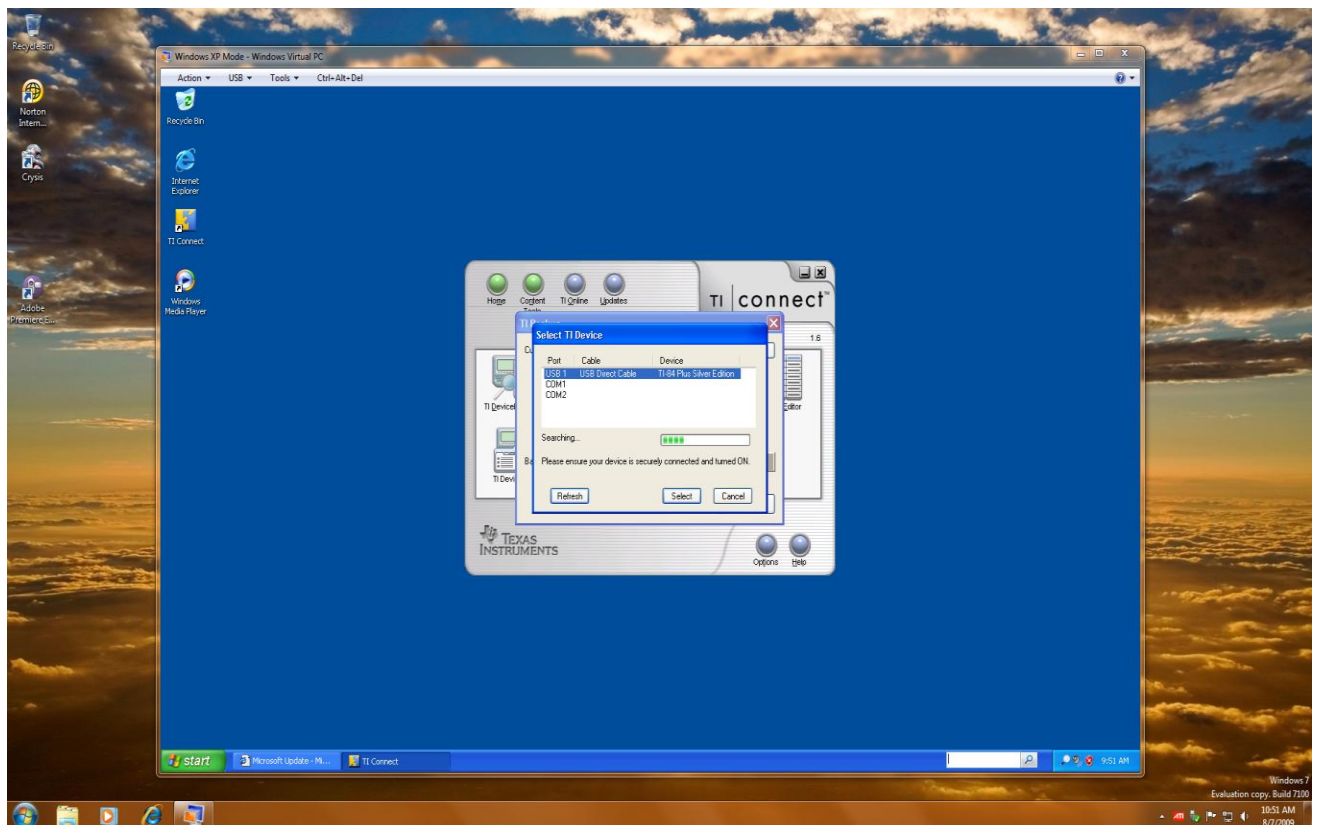
At first Virtual XP will not even recognize that the calculator is not even plugged in, so you must select USB at the top and select your calculator in order to attach it.

And as you can

s



It works the same way that it would in XP (For the most part).



Finally, when you do the same process that you used to attach your calculator will detach it.

...So are you ready to get Windows 7?

Thank you for downloading