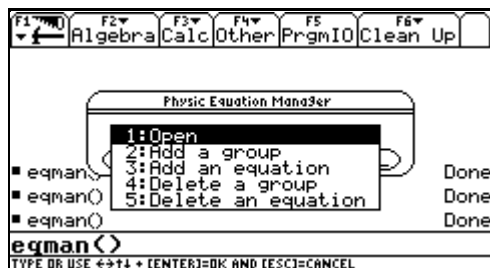


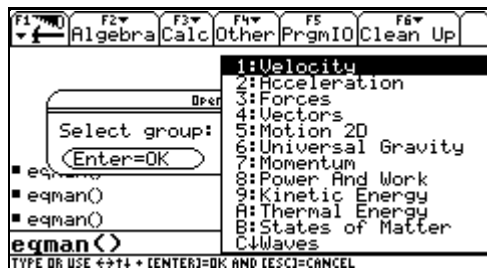
It's a very powerful and light program to solve and manage your equations quickly and easily. You can organize them in groups and create or delete a group or simply an equation. At last you can decide to use the normal or the numeric solving. Physic Pack available.

The first menu allows you to Open an equation or to organize your groups:

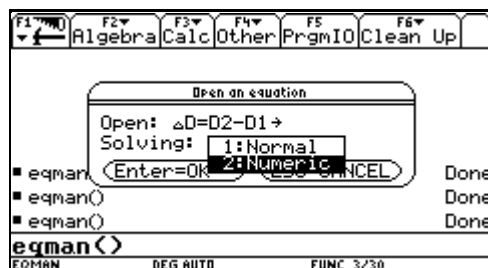
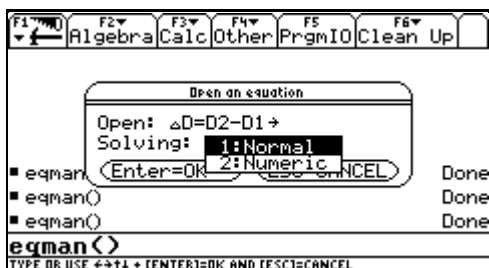


1. Open

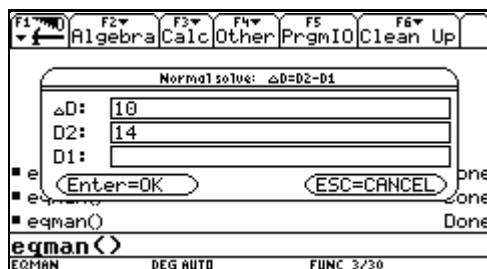
Select a group:



Select an equation and solve it with normal or numeric solving:

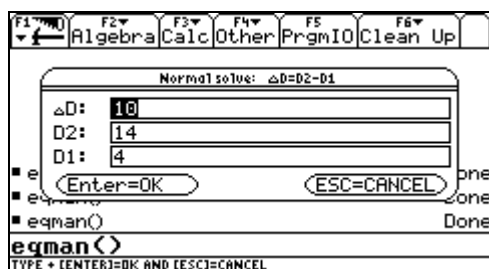


Just keep empty the space of the unknown variable:

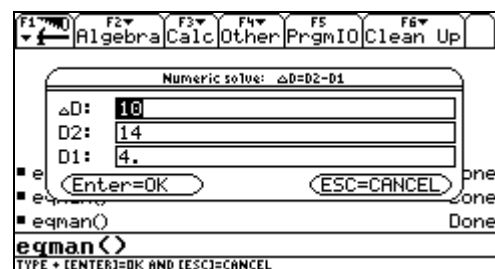


Press Enter

Normal



Numeric

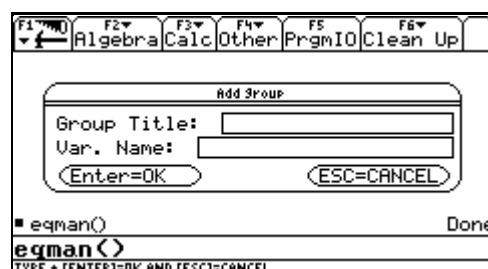


Remember that numeric solving is slower but it is very useful with complicate and implicit equations.

Press Esc to go back.

2. Add a group

Enter group title (you can use more than 8 letters but if it is too long it may cause an Error: Dimension when you'll try to open it) and group variable name:



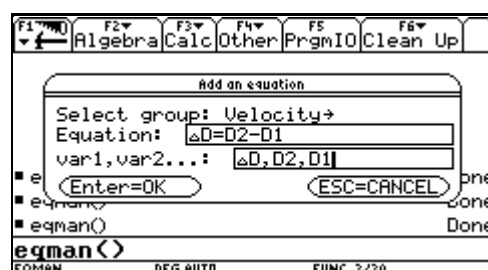
The title and the variable are stored in the program matrix **eqman_m** in the active folder: remember to not delete this matrix!

The group variable (matrix) will be created when the first group equation is defined.

Press Esc to go back.

3. Add an equation

Select the group where the equation will be defined:



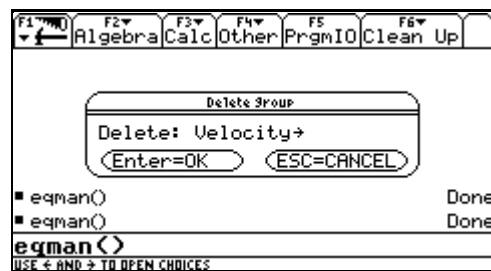
Enter your equation like in the command line of the home screen ("*" will be automatically substituted with "." in the string of the equation) and all variables separated by ",".

When the first equation of a group is entered a new matrix is created with the group name that contains the equations and the variables of each equation. Remember to not delete it!

Press Esc to go back.

4. Delete a group

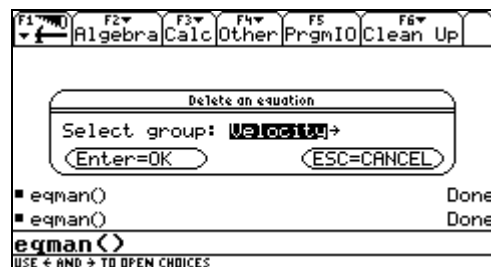
Just select the group to delete and press Enter



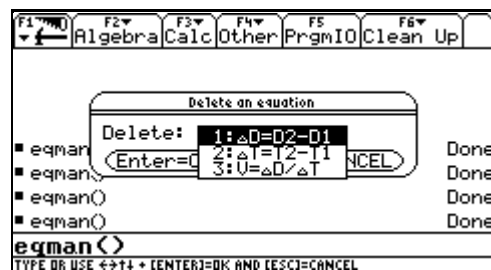
Press Esc to go back.

5. Delete an equation

First select the group that contains the equation to delete:



After that select the equation to delete:



Press Esc to go back.

Equations you can see in the figures are available in a separated pack that you can find at my page on net (the address at the end of the page).

Version 1.03: a new control of number of unknown variables introduced.

This program has been already used many times without problems. If you find any bug first assure you to have selected the English language in the Mode and not to have translated the code with any program. If the problem persists, please, let me know.

For a better and faster answer, please, enclose some screenshot of the bug: entered inputs, expected outputs, error messages, erroneous code line, Mode setting... it will help me very much!

My address is paolosilingarditi@interfree.it; write **TI-Program** as Object of e-mail!

**IN ORDER TO PREVENT SPAMMING, E-MAIL WITHOUT THE CORRECT OBJECT
WILL BE AUTOMATICALLY DELETED!**

You can find all my programs at this address:

<http://www.ticalc.org/archives/files/authors/44/4458.html>.

Remember to vote this program in the site!

Paolo Silingardi