

## TI-GraphLink 89 Vista Setup By Matt Miller

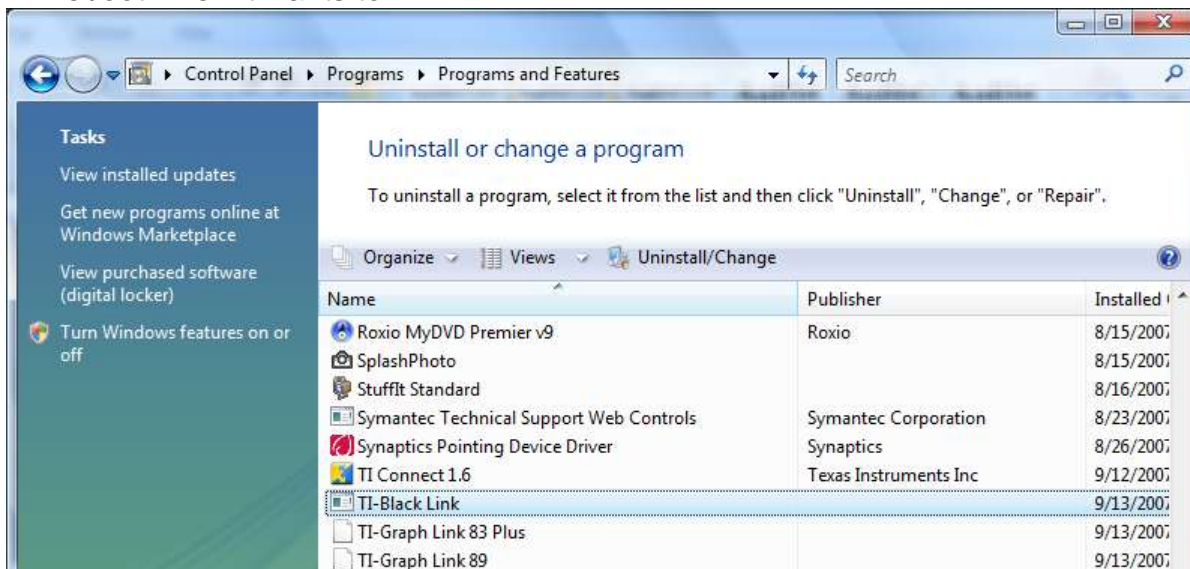
### Installing TI-GraphLink 83 Plus on Windows Vista (32 bit)

1. Launch setup and continue until you see this screen:



**Make sure the box for “Black Link” is cleared...I can’t make it work anyway!**

2. Reboot when it wants to

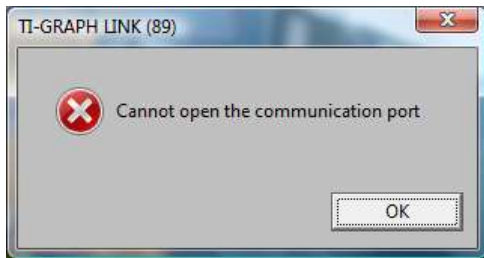


3. Under Control Panel > Uninstall a program, locate “TI-BlackLink”

4. Click Uninstall/Change to remove it and click Finish

## TI-GraphLink 89 Vista Setup

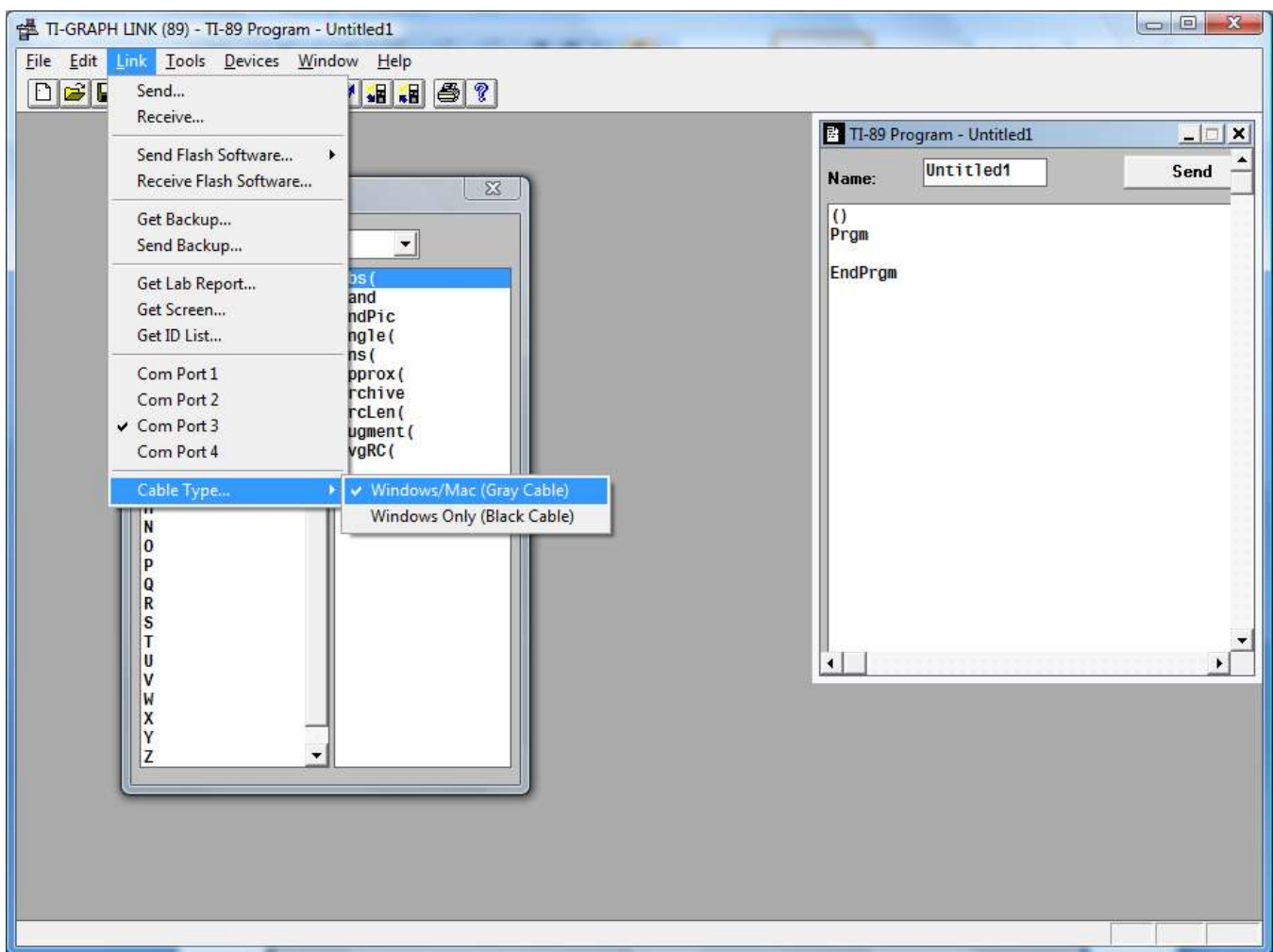
By Matt Miller



### 5. Open TI-GraphLink 89

**NOTE:** if you don't have a built-in com1 serial port, it may complain – click OK and ignore it.

Mine complains for the 89 but not the 83; if you put it on com3 (modem port) and Grey cable it should stop this from appearing but changing the port will also prevent a serial link from working until you change it back...your mileage may vary.



### 6. If you have a serial port (or USB/Serial adapter) and want to use a serial cable, go to Link > Cable Type and select the type

**NOTE:** BlackLink may or may not work, I'm using a home-made cable that uses black-link drivers and it doesn't work with any of my calculators through GraphLink software.

### 7. That's it! Have fun programming!