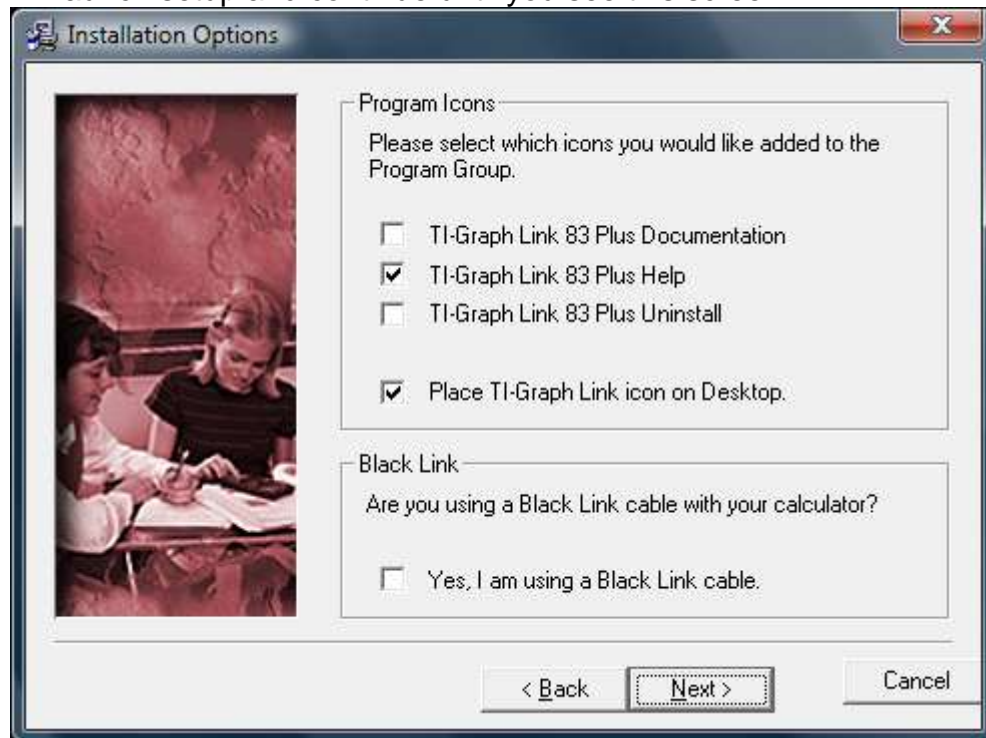


TI-GraphLink 83 Vista Setup

By Matt Miller

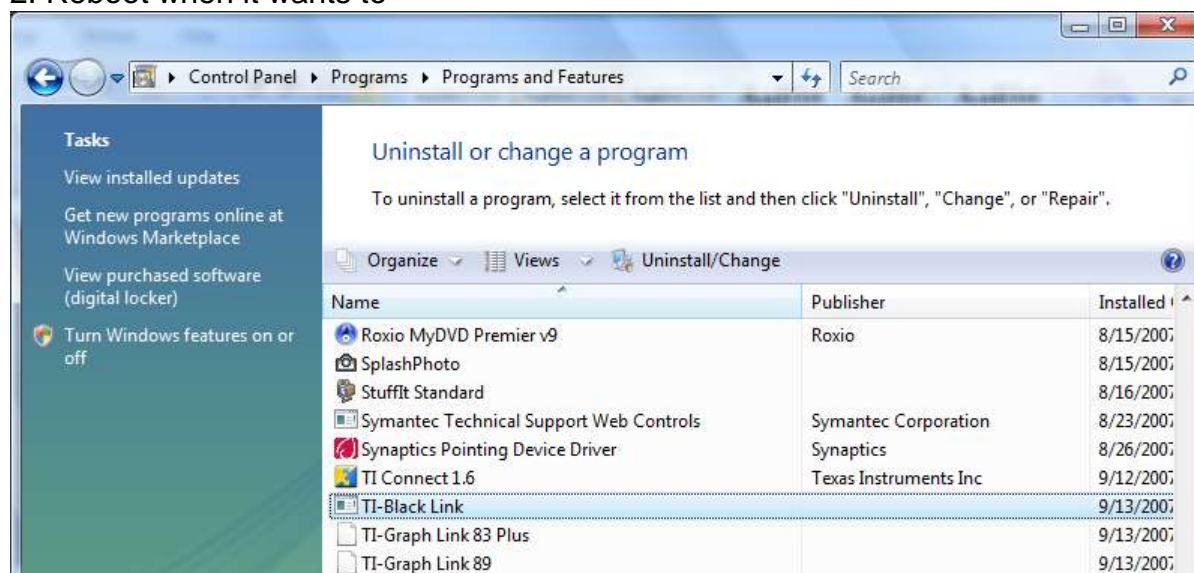
Installing TI-GraphLink 83 Plus on Windows Vista (32 bit)

1. Launch setup and continue until you see this screen:



Make sure the box for “Black Link” is cleared...I can’t make it work anyway!

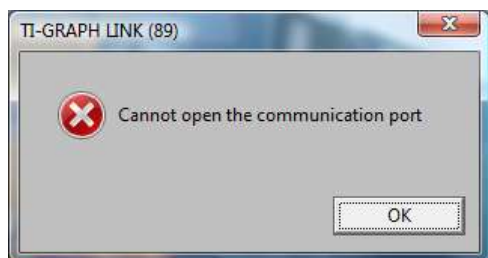
2. Reboot when it wants to



3. Under Control Panel > Uninstall a program, locate “TI-BlackLink”

4. Click Uninstall/Change to remove it and click Finish

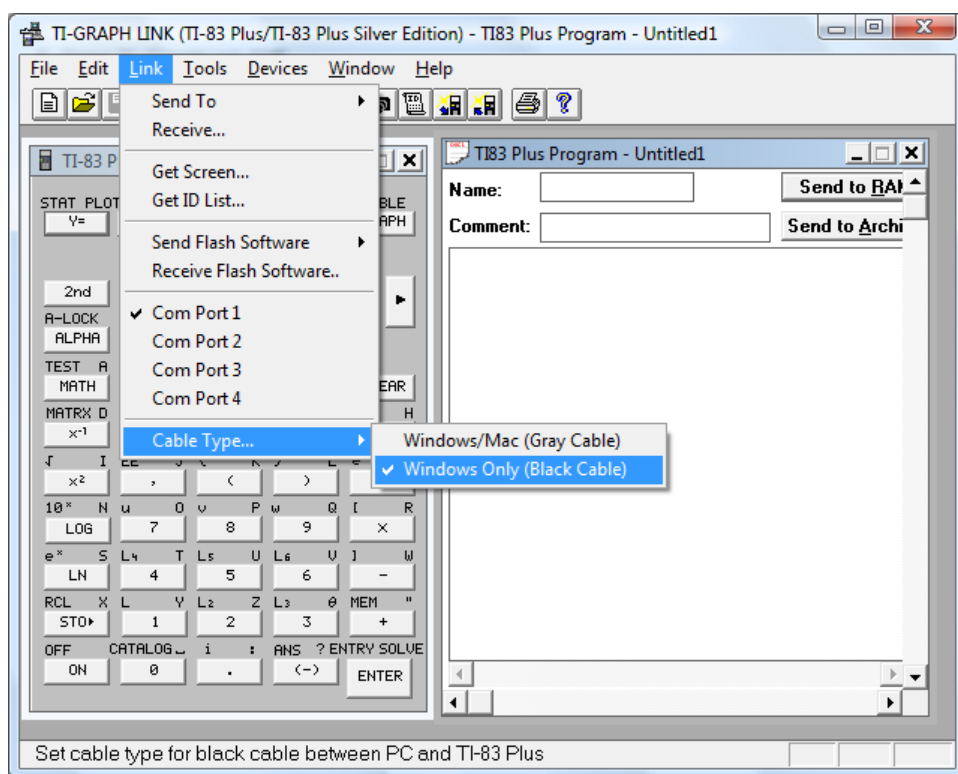
TI-GraphLink 83 Vista Setup By Matt Miller



5. Open TI-GraphLink 83

NOTE: if you don't have a built-in com1 serial port, it may complain – click OK and ignore it.

Mine complains for the 89 but not the 83; if you put it on com3 (modem port) and Grey cable it should stop this from appearing but changing the port will also prevent a serial link from working until you change it back...your mileage may vary.



6. If you have a serial port (or USB/Serial adapter) and want to use a serial cable, go to Link > Cable Type and select the type

NOTE: BlackLink may or may not work, I'm using a home-made cable that uses black-link drivers and it doesn't work with any of my calculators through GraphLink software.

7. That's it! Have fun programming!