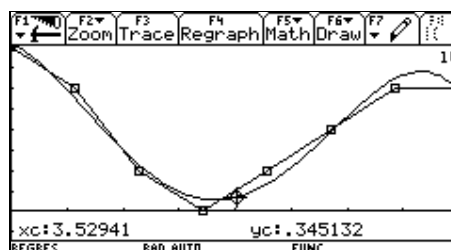
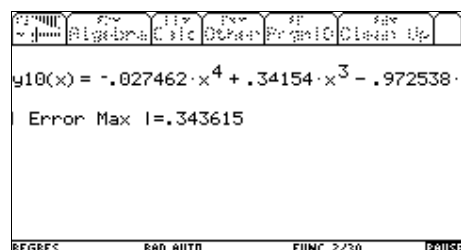
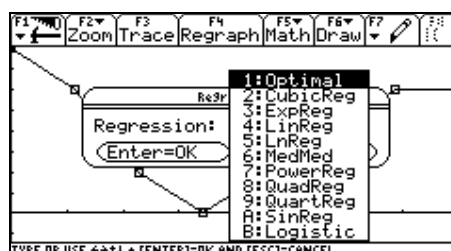
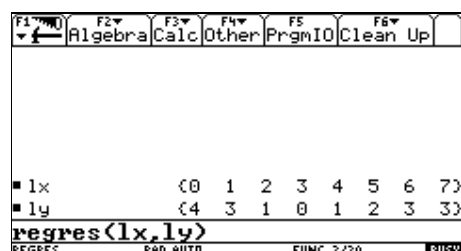


This program finds the best regression or a requested one given two lists of values and saves it. The new version traces the plot and the regressed function and shows the maximum error of regression

Just enter `regres(list1,list2)` and chose the requested regression.



You can trace the solution and use it in another application.

This program has been already used many times without problems. If you finds any bug first assure you to have selected the English language in the mode and not to have translated the code with any program. If the problem persists please let me know.

For a better and faster answer please enclose some screenshot of the bug: entered inputs, expected outputs, error messages, erroneous code line, mode stetting... it will help me very much!

My address is paolosilingardi@interfree.it . Thank you very much for your help!

Paolo Silingardi